



Webbs
Helping people move since 1994

Bromley Close | Cannock | WS12 4QY

Offers Over £200,000

 **Webbs**
estate agents

Summary

** THREE BEDROOMS ** SPACIOUS LOUNGE ** KITCHEN DINER ** IDEAL FOR CANNOCK CHASE ** EXCELLENT SCHOOLS AND TRANSPORT LINKS ** ENCLOSED REAR GARDEN ** AMPLE OFF ROAD PARKING ** EARLY VIEWING ADVISED ** IN NEED OF REDECORATION **

Webbs Estate Agents are pleased to offer for sale a modern-style semi-detached home offering easy access to Hednesford Town Centre and Train Station, excellent schools and transport links, local shops and amenities, whilst also being an ideal spot for Cannock Chase.

In brief, consisting of an entrance hallway, spacious lounge, the kitchen diner is at the rear of the property and gives access to the rear garden.

On the first floor, there are three bedrooms, a family bathroom, and the master bedroom has an en-suite consisting of a hand wash basin and WC. Externally, the property has an enclosed rear garden, and a driveway provides ample off-road parking.

Early viewing advised

Key Features

- THREE BEDROOMS
- ENCLOSED REAR GARDEN
- EXCELLENT SCHOOLS AND TRANSPORT LINKS
- IDEAL FOR HEDNESFORD TOWN CENTRE
- EN-SUITE TO MASTER
- SPACIOUS LOUNGE
- CLOSE TO CANNOCK CHASE
- KITCHEN DINER
- OFF ROAD PARKING
- VIEWING ADVISED

Rooms and Dimensions

ENTRANCE HALLWAY

SPACIOUS LOUNGE

18'1" x 13'11" (5.516 x 4.248)

KITCHEN DINER

13'10" x 9'3" (4.223 x 2.826)

LANDING

BEDROOM ONE

10'7" x 7'2" (3.248 x 2.208)

EN-SUITE

BEDROOM TWO

9'8" x 7'3" (2.957 x 2.225)

BEDROOM THREE

9'1" x 6'5" (2.783 x 1.970)

FAMILY BATHROOM

7'2" x 6'5" (2.206 x 1.968)

ENCLOSED REAR GARDEN

FRONT DRIVEWAY





Webbs
Helping people move since 1994



Webbs
Helping people move since 1994



Webbs
Helping people move since 1994



Webbs
Helping people move since 1994



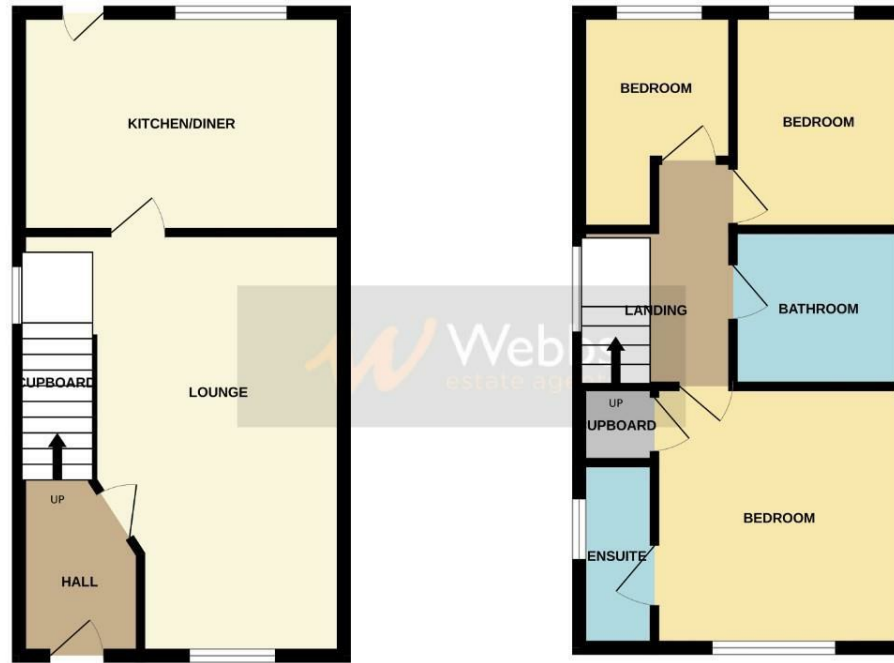
Webbs
Helping people move since 1994



Webbs
Helping people move since 1994

GROUND FLOOR

1ST FLOOR



Whilst every attempt has been made to ensure the accuracy of the floorplan contained here, measurements of doors, windows, rooms and any other items are approximate and no responsibility is taken for any error, omission or mis-statement. This plan is for illustrative purposes only and should be used as such by any prospective purchaser. The services, systems and appliances shown have not been tested and no guarantee as to their operability or efficiency can be given.
Made with Metreplex ©2025

Webbs Estate Agents - endeavour to maintain accurate depictions of properties in Virtual Tours, Floor Plans and descriptions, however, these are intended only as a guide and purchasers must satisfy themselves by personal inspection.

